



**Catchment
Based Approach**

Loddon Catchment Partnership

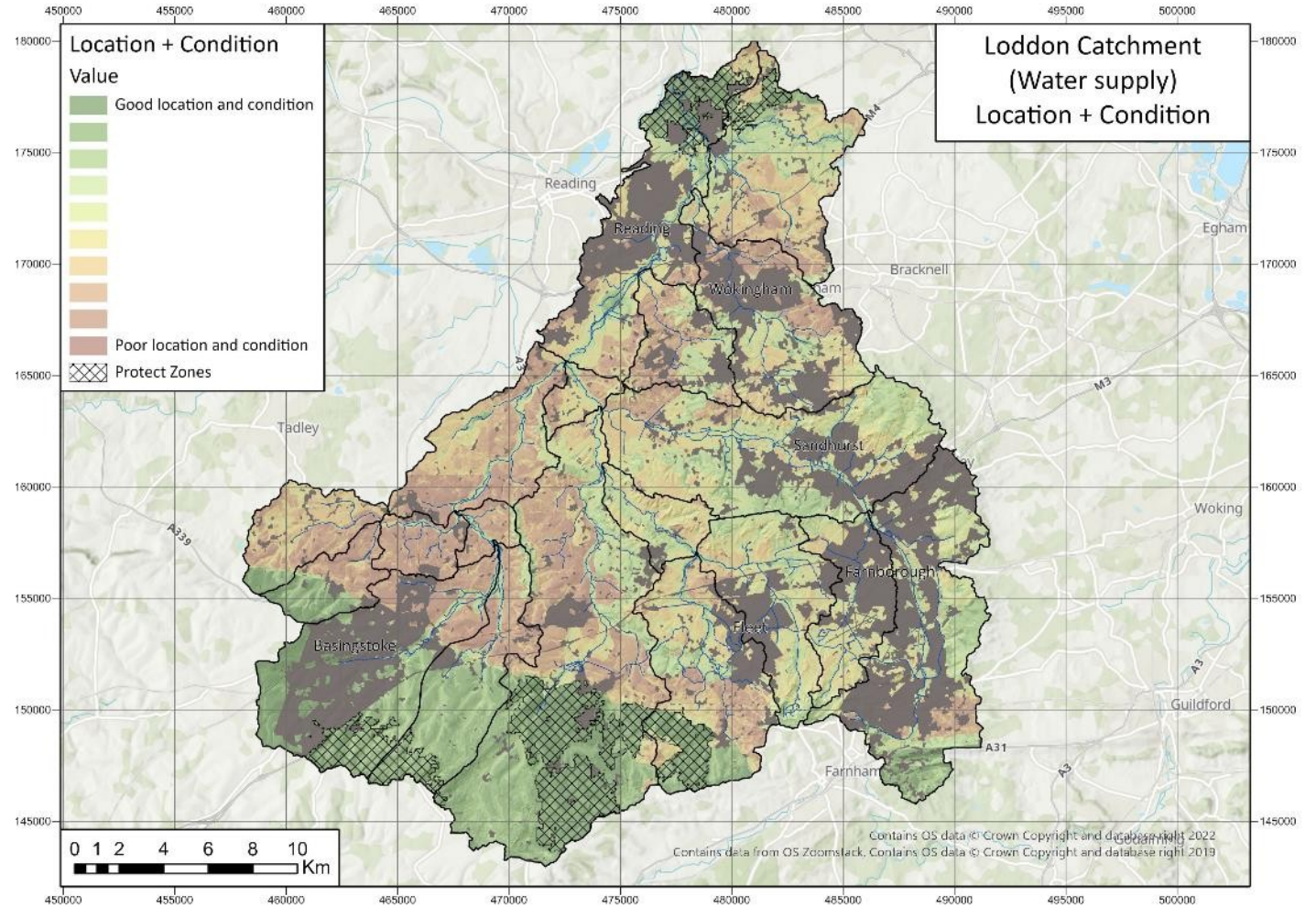
A look back at 2023

Lou Sykes

Natural Capital Mapping

WATER SUPPLY

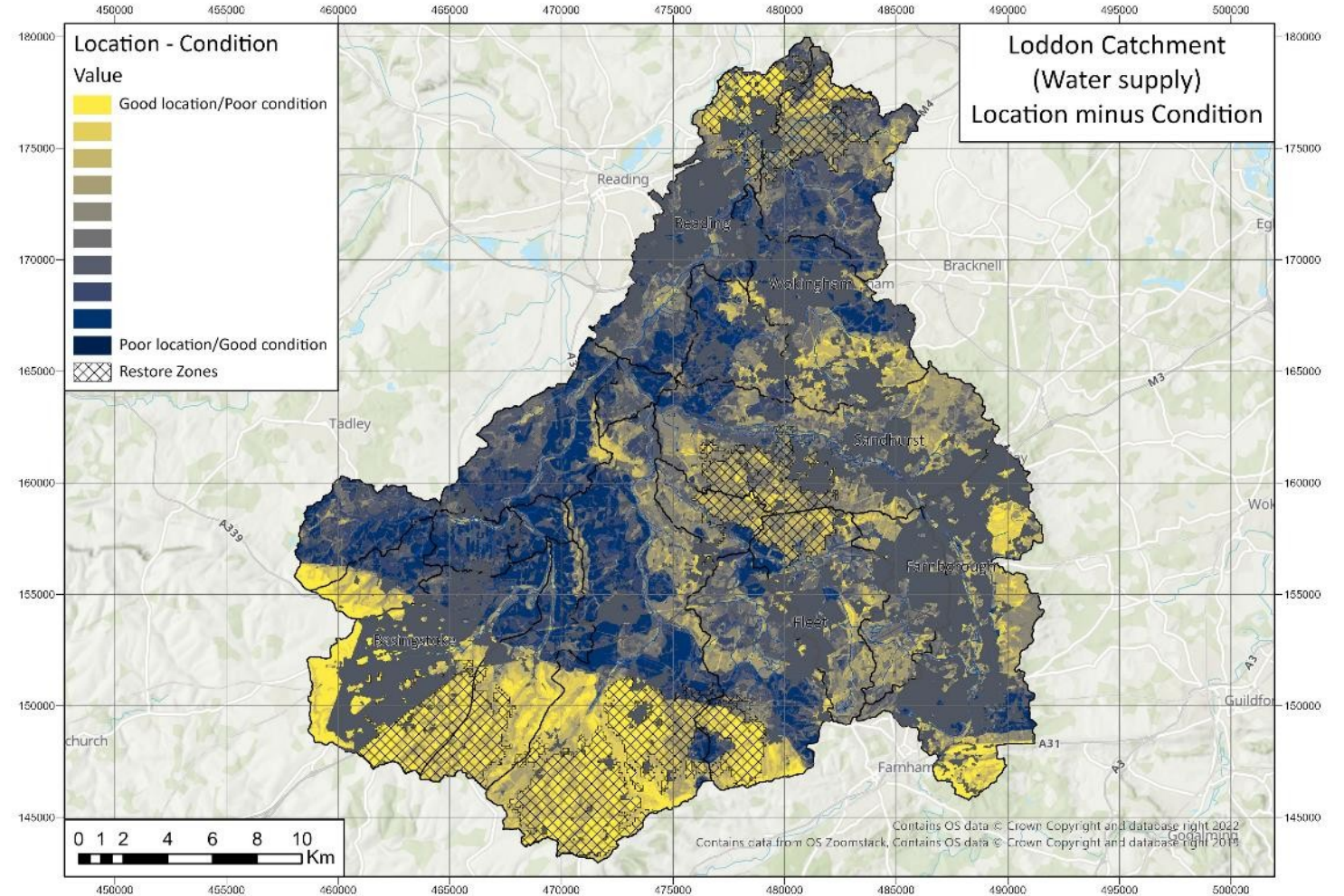
Areas that are in a **good** location and **good** condition and need protecting.



Natural Capital Mapping

WATER SUPPLY

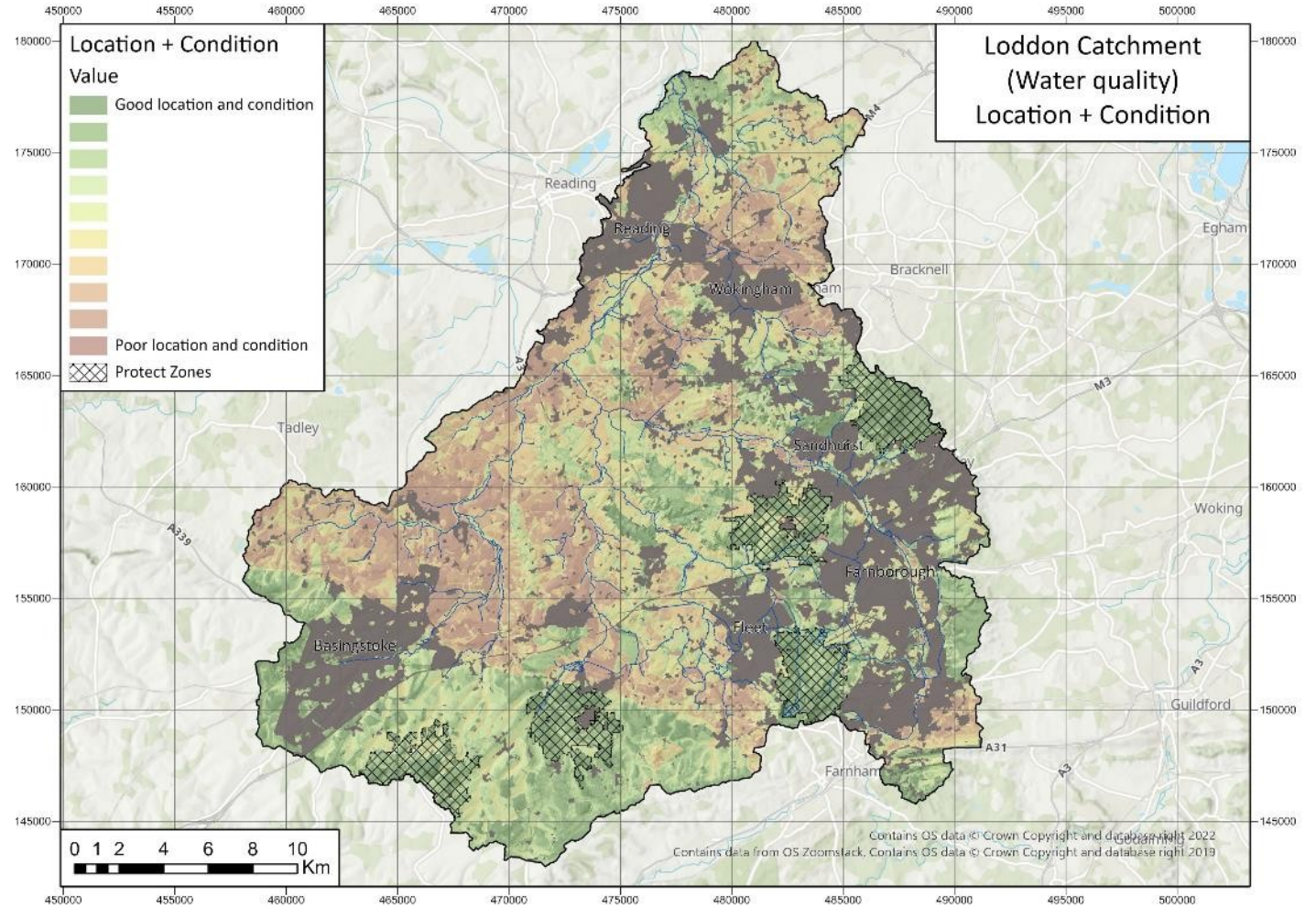
Areas that are in a **good** location and **poor** condition and need restoring.



Natural Capital Mapping

WATER QUALITY

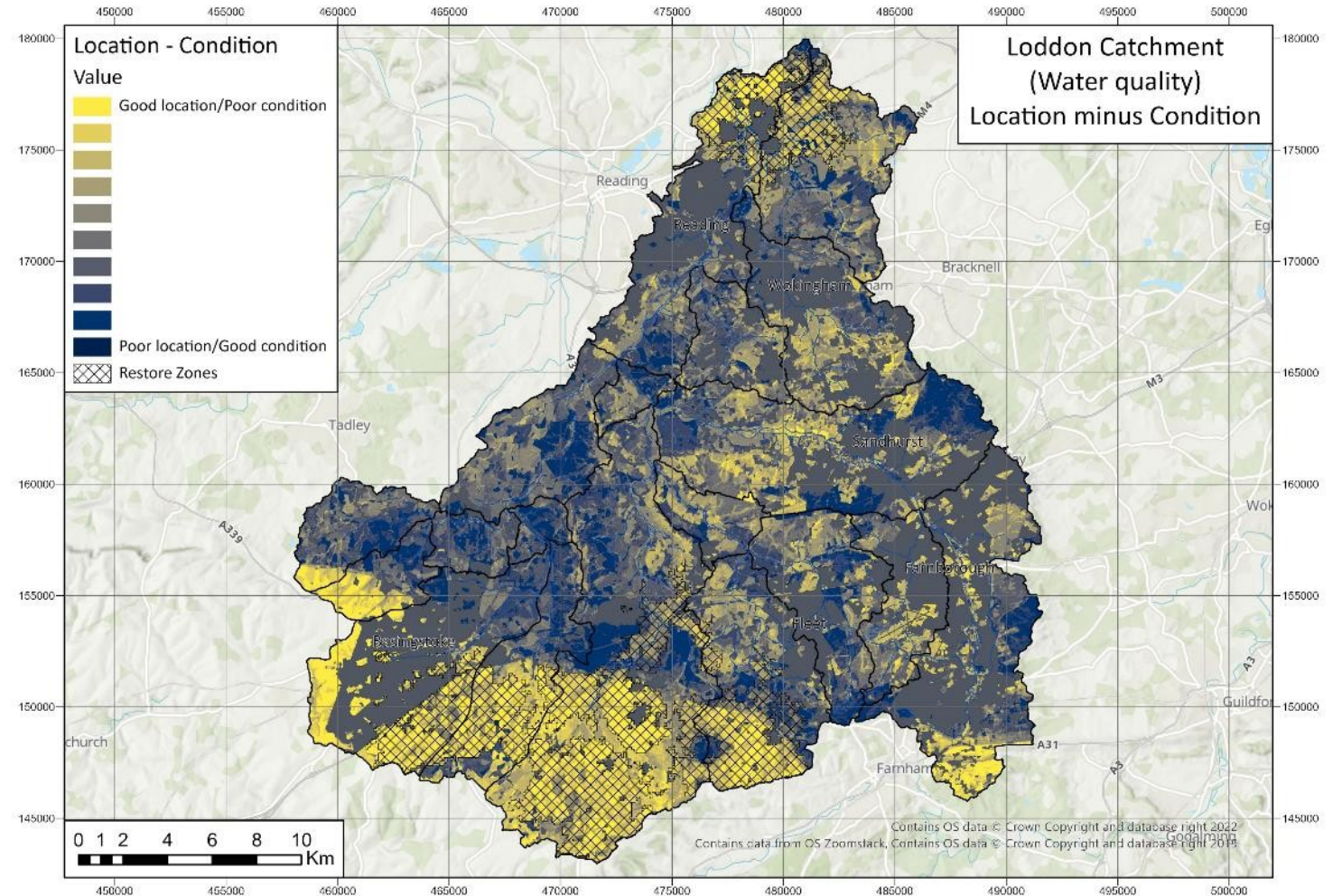
Areas that are in a **good** location and **good** condition and need protecting.



Natural Capital Mapping

WATER QUALITY

Areas that are in a **good** location and **poor** condition and need restoring.



Funding success

Funding: Thames Water, Basingstoke & Deane Borough Council

Total: £30,883

1. *Desk study*: using EA, water company datasets and SCIMAP run off modelling to understand the current knowledge of water quality issues in the catchment.
 2. *Sediment pathways*: using pollution source tracing to walk priority areas in the catchment to trace where inputs are coming from.
 3. *eDNA sampling*: to analyse microbial communities to establish the make up of pollution entering rivers.
-

Loddon Rivers Week



Looking into 2024

- Catchment wide eDNA monitoring of bacterial communities looking at urban and rural sources of poor water quality
 - Pharmaceutical monitoring with Imperial College London, looking at chemical loads in rivers
 - INNS monitoring and removal
 - Loddon Rivers Week 2024
-